

KRONE – AT THE MERE PUSH OF A BUTTON



AT THE MERE PUSH OF A BUTTON

CIDEON Documents and Output Management at the Krone Group

The Bernard Krone Holding GmbH & Co. KG is one of Germany's most successful companies in the metal industry. A consistent increase in production output is posing new challenges to the company's process management. That is why the introduction of SAP is now one of management's top strategic priorities. With the implementation of CIDEON Output Management at the Maschinenfabrik Krone GmbH, the company has now completed a major phase of this project.

Managing Complexity

The success of the Krone Group has led to a growing number of staff being employed in the design and production departments. The company's business processes must be constantly upgraded to ensure that the increasing complexity of the company's internal procedures does not slow down the company's growth. This is where document management plays a key logistical role at Krone.

Krone's document management begins with the design stage where more than 5,000 different documents are needed to produce a straw cutter: drawings, test reports, conformity certificates and other documents. These documents must not only be immediately available for use by



the staff of the company, but they must also be issued to customers, suppliers and the authorities in various formats and with all the required additional information.



High-quality agricultural machines and utility vehicles are the specialty of Krone GmbH. This is where the company has earned its international reputation in its more than one hundred years of existence. Krone is a world leader in the field of grassland harvesting technology. It is also the second largest trailer manufacturer in Europe. With more than 2,000 employees, the Krone Group generated record sales of 978 million Euros in the 2005/2006 business year. This trend is likely to continue in the near future with sales of 1.1 billion euros expected for the 2006/2007 business year. This equals a solid double-digit growth rate!

Dr. Goy Hinrich Korn, head of Organisation/EDP at the Krone Group, has therefore requested a Document and Output Management system for design and production documents which can be directly integrated into the software for planning the use of resources. Krone commissioned CIDEON AG to implement this ambitious project.

CIDEON Output Management

CIDEON implemented a high-performance Output Management solution. For this purpose 35 CAD workstations (equipped with CAD CATIA V4 software) were linked to the SAP system. The integrated administration of models and drawings makes it easier for the design engineers to work with the various versions and also considerably speeds up the release processes.

After a final test, the CAD/CAM drawings are now directly transferred to the SAP system from where they are imme-

diately available to the whole company. Plotting, printing, storage on data carriers and in the file system or dispatch per E-mail – all of this can now be done at the push of a button direct from the SAP system by the combined CIDEON Output Management.

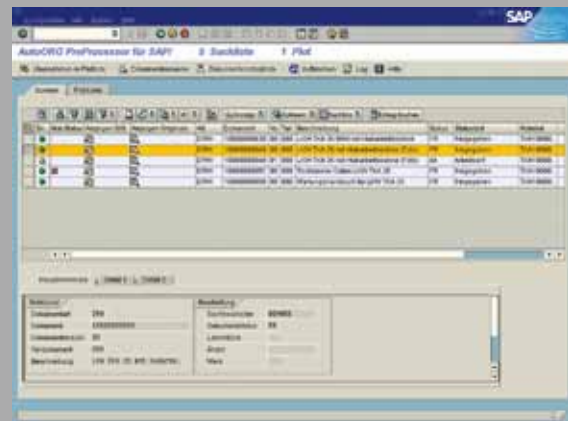
The new system was implemented without any complications. Only a few weeks after the first workshop in Emsland Germany, the Output Management software was fed by SAP transport, with program packages being installed and adapted to the Krone requirements and the new users being familiarized with the system. All in all, more than 115,000 documents of which 110,000 were CAD models and drawings (CATIA V4, CADAM) were transferred into the SAP system.

documents are now dispatched together by E-mail with no loss of data. Using the selection mask purchasing staff can create various detailed Bills of Material as required. In addition, not only the drawing records for the selected materials can be issued, but also those for the complete associated Bill of Material structure.

In the event of changes, all documents including the Bill of Material are issued and assigned to a supplier. The documents being issued are recorded both for the records and for selecting the documents required to process the order of a specific supplier.

“This means a great savings of time.”

Michael Blume, EDP system administrator at the Maschinenfabrik Bernard Krone GmbH



Specific Selection, Quick Results

All documents relating to a production order are now available at the push of a button – together with a standard order number. This helps to save time and assures that all relevant project documents are always completely available. Drawings can be selected with the help of the material number. In the case of several versions of a drawing the system will automatically recommend the version which has been released.

Not only the design and production departments but also the purchasing department profit by the new system. With order processing and an SAP supported request, all

CIDEON Output Management

Suitable for use with all generations of SAP ERP software, the CIDEON Output Management system as an integration platform organizes the company-wide management of the issuing of a wide variety of technical documents. CAD models, drawings, etc. are migrated to SAP and made available in a process-integrated form through the CIDEON Output Management system for the logistic and material management and control as well as for internal and external production purposes.

