

COST SAVINGS THROUGH EFFECTIVE FACILITY MANAGEMENT IN THE HEALTH SECTOR

Since 2004 the university clinic in dresden has been making use of SAP ERP products in its business processes. During this time it has been regularly optimizing these processes by using this software.

A considerable potential for the joint use of CAD drawings and the alphanumeric data of the SAP system exists in the field of Facility Management as well as the maintenance and repair of medical equipment.

In the past the graphic information available in surface plans, building layouts and supply plans have been kept separate from the structures displayed in SAP EAM (Enterprise Asset Management). These data could therefore not be used together.

To close this gap and create a standard database for the whole clinic, tenders were invited at the end of 2007 for the implementation of a Middleware for integrating SAP and AutoCAD.

AutoCAD 2008 is the standard software which is being used consistently for displaying all buildings and surface areas of the university clinic. These assets have been recorded and vectorized in the CAD system since 1994 following a strict CAFM regulation issued by the clinic. All new buildings and reconstruction measures are now being subjected to this regulation and updated regularly.

The university clinic is being assisted in this endeavor by the engineering office INFOTEC Bauconsult Dresden GmbH.

„Without a consistent and long term implementation of the graphic room book using CAD we would not have been able to carry out the project with the help of CIDEON in such a short time. We also benefited from the fact that we have already been



using SAP PM (maintenance) successfully and that the university clinic has aligned itself strategically with this platform.“

Steffen Kluge, Head of the Facility Management of the UKD University Clinic and regional head of the FKT – Fachvereinigung Krankenhaustechnik e.V.

Controlling by graphical analysis

By calling for tenders for the Middleware to link SAP and AutoCAD, the UKD is pursuing the following goals:

- utilization of CAD plans in SAP
- improvement of the control through graphic assessments on the basis of CAD drawings
- simplification of usability by enabling to run SAP transactions from out of the graphic representation
- assurance of data quality through a bidirectional synchronization of the meta data of drawings and SAP objects
- avoiding the use of redundant data by filling and using graphic drawings in the SAP applications
- management of CAD drawings in the Document Management System of the UKD and their administrative authority
- uniform graphic user interface for all room and equipment data in graphic and numeric form

Here the CIDEON CAFM Suite with its graphic user interface integrated in SAP was awarded the tender. As an Autodesk system house and an SAP Development Partner in the integration of CAD, CIDEON contributes a wealth of experience in both of the areas which are being integrated. The CIDEON CAFM Suite has not only been certified by SAP “Powered-by-Netweaver”, but it also offers its customers the security of a complete SAP integration.

The CIDEON Publisher, which is completely integrated in SAP, can not only display stored CAD drawings, but, for

example, it can also highlight any local disturbances using color codings. Equipments can also be overlaid and shielded and thus detailed technical as well as architecturally clear views shown.

With the help of automatic import mechanisms, these objects can be automatically recognized in the drawing and also created in the right structure during an import through the CIDEON interface.

On the one hand the UKD has structured its Functional Locations in SAP spacious (location/building/floor/room). On the other hand there is a parallel structure for cost types according the DIN 276, which is used for costing purposes. The equipments are not installed in the spacious Functional Locations, but into the cost type structure because of the costing needs. However the spatial assignments of these Equipments are guaranteed so that they can be located within the CAD drawings.

The project was carried out from April until September 2008. The 350 floor plans with approx. 20,000 Equipments were transferred to the system within a period of approx. two months. This migration process benefited from the high quality of the data of the drawings and the data structure.

Simple coherence between graphic and ERP

The approx. 30 Key-Users consisting of the property and technical managers can now create a connection between the graphic and the ERP system and switch from the SAP processes and the SAP master data management to the graphics (floor layout) much easier and quicker now.

Fault notifications can be created by a context menu action on the Equipment from out of the CAD drawing very easy. The SAP screen for entering the notification details will be filled with master data of the selected Equipment automatically. The user has to fill in additional like a fault description only.

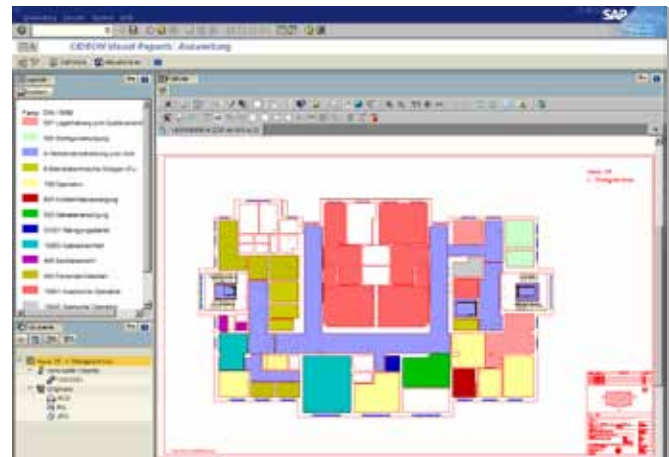
Evaluate data in graphical context

Using the CIDEON Visual Reports, an element of the CIDEON CAFM-Suite, the assessments in SAP can be placed into a graphic context. Here the expression of classification data such as room and usage type or space types according to DIN 277 can be visualized graphically.



University Clinic Carl Gustav Carus Dresden

The university clinic Carl Gustav Carus Dresden (UKD) of the University of Dresden is a hospital facility with approx. 1,400 beds consisting of 21 clinics, 4 institutes and a stomatology centre. It constitutes an institute under public law, and with its 700 physicians and 1,600 nurses it covers the complete range of modern medical facilities and is also well known far beyond the limits of the city of Dresden and the state of Saxony. In its function as a hospital, the UKD is integrated into the public health service and is also active in the field of training and education.





Important for the Facility Management of the UKD however is a visualization of the maintenance costs related to the surface information or a display of the faults and the fault frequency related to the room and surface information.

This functionality is important for the next measures planned by the university clinic where it will be carrying out a more usage related distribution of the incidental costs of the institutes, clinics and third party users. With a view to

the relevant rising costs and the increasing need for more clarity, here CIDEON will also be able to create a solution too, which meets the requirements of the management rather quickly. By being integrated into the SAP application Real Estate Management, costs, historic conditions and procedures related to the surface information can be displayed graphically and thus used more effectively in the decision making process.

CIDEON CAFM Suite

The advantage of this solution lies in the management of alphanumeric SAP and graphic AutoCAD data without redundancy. The drawings are filled in SAP DMS in using the native file format. Through the link of the graphic objects (e.g. room and floor), with the corresponding SAP objects, both the spatial situation and also the costing based interrelations can be easily understood.

